

[HOME](#)[PRODUCTS](#)[MOST UNIQUE USE CONTEST](#)[SHOW SCHEDULE](#)[DEALERS](#)[ABOUT](#)[CONTACT](#)

Cannonball Engineering, LLC :: Copyright 2012 :: All Rights Reserved.

Do it all...

Better Engineering makes a bale bed like no other - that makes your work quicker and easier.

[Find a Dealer](#)

Patented Dump Feature

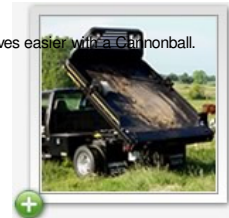
We have numerous dealers throughout the United States to serve you. Many are Certified Cannonball dealers.

Cannonball's patented dump feature expands your capabilities to handle hay and dump materials from the comfort of your bale bed!

There is no other unit on the market like it. Our patented feature permits the same hydraulic system to be used for both arm and dump functions. With our feature-rich bed you gain much more value for our dollar. Our lift capacity is 2,850 pounds, and our dump capacity is 6,000 pounds.

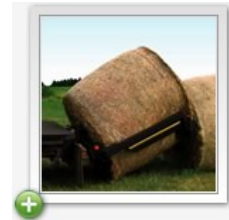
[Most Unique Use Contest](#)

Look at all the creative ways Cannonball owners make their lives easier with a Cannonball.



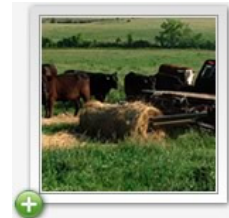
Independent Arm Action

Cannonball uses two squeeze cylinders, rather than a phasing cylinder, for better squeeze and maneuverability. You can move the arms separately or in tandem for easier bale retrieval when stacked end to end. This also helps loading into a ring feeder, even if you don't have a straight shot at it. Lift any size or shape - round, square, wide, or narrow. You can haul up to four 4' rounds side by side with a dual wheel pickup. You can also squeeze a large 4' by 8' square bale end to end or from the side. Cannonball's arm range of 3'6" to 9'6" enables you to grab small or misshapen items, too.



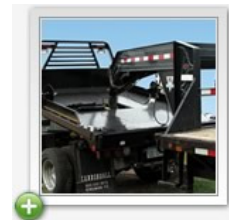
Free - Float Arm System

The free-float arm system allows you to unroll hay while maintaining full contact with the ground over rough terrain. This function helps to prevent skips and thick blankets of hay, allowing even distribution of feed and reducing waste.



No Need to Jack Trailers

Cannonball makes work easier and quicker in so many ways, especially hooking up your gooseneck trailer. Just raise the bed until the jack stand is off the ground, store the jack, lower the bed, and off you go. No more cranking!



Locking Valve System

Our unique locking valve stops arm creepage when carrying hay bales. And, unlike other units on the market, our patented design significantly limits truck frame stress.

Additional Standard Features

- Electric-over-hydraulic
- H-frame stabilizer system
- Heavy 2 x 4 x 3/16" rounded bent tube headache rack with louvers
- 2-5/16" 30,000 pound rated ball
- Smooth floor with component access door - no door hinges!

Mud flaps
Tie down rings

Optional Features and Accessories

Optional engine-driven power units
Rawson-Koenig Underbody Toolboxes

RKI truck boxes are built to withstand tough conditions, crafted from 14-gauge (minimum) steel with stainless steel hinges and full-size stainless steel paddle latches. They also come with a tough polyester powder-coat finish available in black.

Optional headache rack Work Lights

55 watt halogen work lights and additional stop/turn lights

Spinners for unrolling

Sideboards

Receiver hitches

Six Available Sizes

SSN: 7' wide x 7'8" long

The SSN bed fits single wheel trucks with a short six foot bed. It has a 42" cab to axle measurement.

SN: 7' wide x 8'10" long

The SN bed fits single wheel trucks with a standard eight-foot bed. It has a 56" cab to axle measurement.

LN: 7' wide x 9'10" long

This bed fits a true cab and chassis ton truck with single wheels and a 60" cab to axle measurement.

SW: 8' wide x 8'10" long

This bed fits a dually bed truck. It has dual wheels and a 56" cab to axle measurement. This is often called a bed delete truck. It has a bent (dog leg) frame as opposed to a straight cab and chassis frame.

LW: 7'8" wide x 9'10" long

This bed fits a true cab and chassis ton truck with dual wheels and it has a 60" cab to axle measurement. This truck comes from the factory without a bed. It has a straight frame.

LLWW: 8' wide x 12' long

This bed fits dual wheel trucks with 84" cab to axle measurement.

Warranty and Replacement Parts

Cannonball Engineering, LLC, has manufactured bale beds for many years with an excellent reputation for quality and workmanship. Click [here](#) to read our [Warranty](#). You can also click [here](#) for a list of [Replacement Parts](#).

